

CHISON

Value Beyond Imaging

SonoBook9

Fast • Precise • Cutting-edge



WWW.CHISON.COM



Never
compromise **performance**
For portability

- ✓ What if a compact system could be so intuitive that it can be operated without a manual?
- ✓ What if a compact system could respond instantly between different modes?
- ✓ What if a compact system could operate for an entire work day with only one battery charge?
- ✓ What if a compact system could weigh as little as 12 lbs?
- ✓ What if a compact system could detect ultra-slow velocity $< 2\text{cm/s}$ on tiny vessels, and also not miss the high velocity $> 40\text{cm/s}$ on cardiac?
- ✓ What if a compact system could image superficial tissues within 2mm and achieve more than 30cm of depth clearly on 250lb difficult patient?

SonoBook 9 is the answer



Cardiovascular

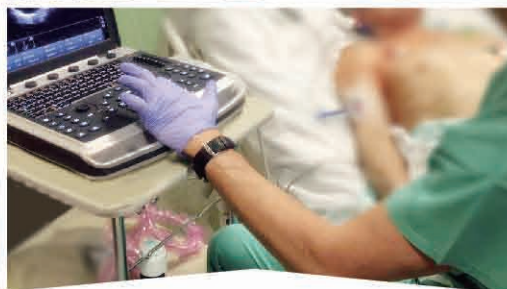
- Instant response.
- Innovative transducer technologies are used for extraordinary cardiac performance.
- Comprehensive cardiac measurement packages: Stress Echo, Auto IMT, Semi-automatic Simpson measurement, PISA, and etc.
- User-definable cardiac measurement workflow.
- Comprehensive range of probes for cardiac scanning: TEE, Pencil & Phased array.

Radiology

- Versatile probe range covering 1.5 MHz-23 MHz.
- Efficient workflow to meet different environments.
- Real-time curved panoramic imaging.
- Advanced technologies: Q-beam, Q-flow, Q-image, FHI, X-contrast.
- Extraordinary performance for easy diagnosis.
- Probes: Convex, Linear, Transvaginal, Transrectal, Micro-Convex, etc.

Women's Healthcare

- Auto-trace measurement for breast lesions and follicles.
- Quantitative elastography analysis for breast.
- IVF procedures: Multiple follicles report, Dedicate EPU kit.
- Auto NT measurement, 4D, virtual HD, depth view for OB, etc.
- Multi-slice imaging for detailed diagnosis of fetal defects.
- Probes: Convex, 4D, Linear, Wide angle transvaginal (up to 210°), High density probe.



Anaesthesia

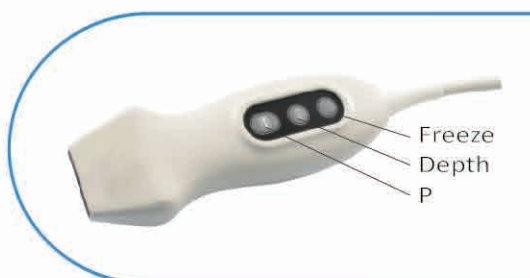
- Superior anesthesia performance.
- Super Needle visualize the needle better without degrading the image.
- 2D steer.
- Multi zoom function for tiny structures, Full screen to enlarge the image area.
- Probe: 192 elements linear, 18MHz high frequency probe, button-probe.

Critical Care

- Truly portable design <12 lbs.
- Fast and reliable performance.
- Dedicated process for ICU purpose.
- Triple probe connector and precision cart (Option).
- Instant response.
- Excellent battery life, up to 2 hours of continuous use in active mode, up to 1 week in standby mode.
- Probe: Phased array, Convex, Linear, Micro-convex, button-probe.

Emergency

- Fast boot-up.
- Longer battery life up to 2 hours active mode, fast battery swap.
- Auto-ambient adjustment according to indoor and outdoor environment.
- Durable & Robust design for challenging environment.
- Probe: Phased array, Linear, TV, button-probe.
- Built-in FAST preset.
- Wifi-compatible.



Button-probe

- Remote control of the system through probe buttons, free your left hand for other important work.
- Program the **P** button, for simple, fast and precise use.
- Provide immediate image refinement with one click.
- Easy control & easy hold.
- Easy to sterilize.

Small Outs Huge

Ultra

- Ultra-Light<12lbs(with battery)
- Ultra-Slim
- Ultra-compact
- Ultra-deep penetration >30cm
- Ultra-superficial observation < 2mm
- Ultra-slow velocity detection <2cm/s
- Ultra-high velocity detection > 40m/s

Faster

- Boot up< 1min
- Shut down < 15s
- Still image and cine can be saved in 1S
- Instant response

Wider

- Versatile solutions:Cardiovascular,Radiology,Internal Medicine,Small Parts,General Imaging,Vascular,Intensive care,Emergency,MSK,ICU
- Supports 28 kinds of probes
- Covering 1.5 MHz- 23 MHz frequency range
- 192 elements high density probe
- Intra-operational probe (available)
- TEE probe
- New technology probe (available)
- Large Storage Size(10 thousands of images and cines)



Docking ①
(DVI-I, Foot-Switch,
Video-Out, remote, etc.)



Anti-theft lock

Accessories

Printer socket



Triple-transducer

Hydraulic h

Small footprint ⑦

de Inside



More Connectable

- Intelligent patient's data management
- Docking: DVI-I, Foot-Switch, Video-Out, remote, S-Video
- USB3.0
- Wifi-Compatible
- DICOM: Structure report, worklist, storage, print

Smarter

- AIO (Automatic Image Optimization for B mode & D mode)
- Auto Measurement: Auto IMT, Auto NT, Auto -trace for PW, Auto-trace for follicles and breast lesions
- User-defined workflow

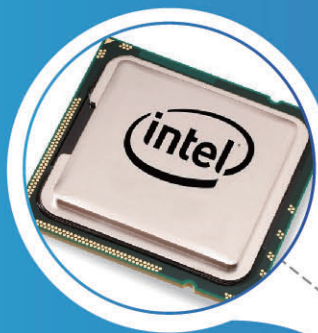
Greener

- SSD for lower power consumption
- Standby mode to save energy
- Auto-ambient adjustment to save battery life
- Low heat and noise design



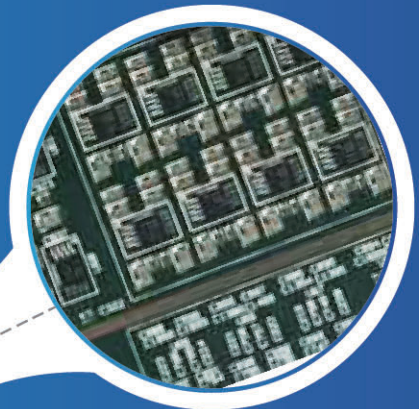
Multipurpose suitcase: either as backpack, or as carrying case.

High-Performance Architecture



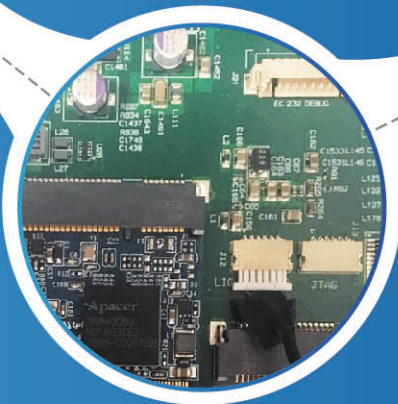
+ *WIFI,SSD,4D,ECG*

HIGHLY INTEGRATED
POWERFUL MODULE



+ *PC*

HIGH PERFORMANCE
INTEL PC PLATFORM

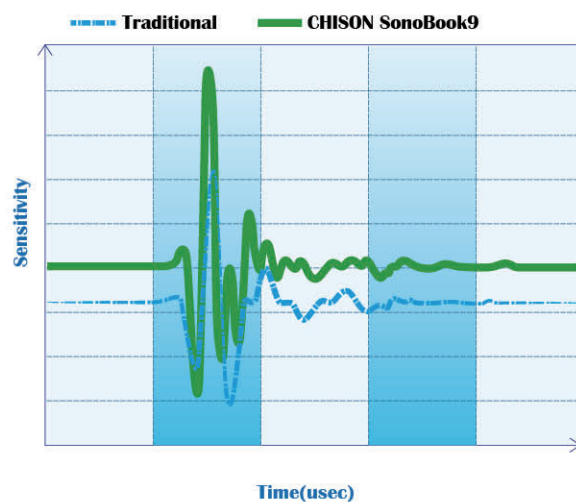
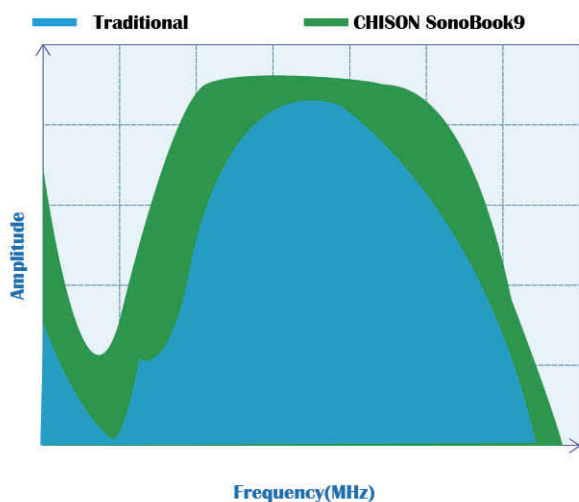


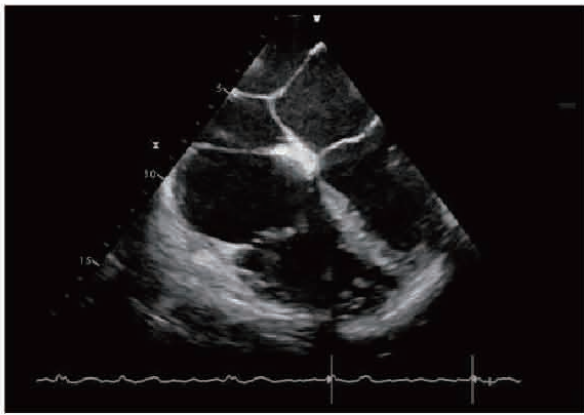
+ *TX/RX*

THE CUTTING EDGE
TX/RX PLATFORM

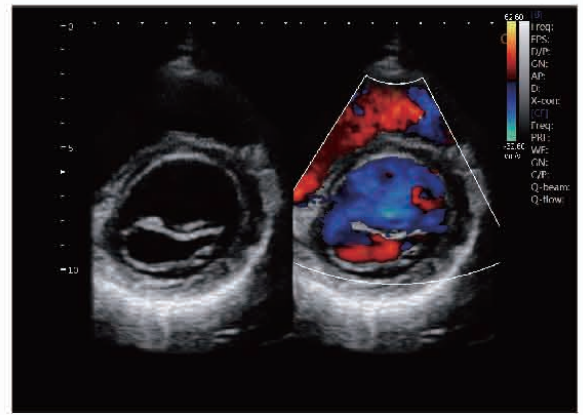
Innovative Transducer Technologies

SonoBook9 uses the latest advances in transducer technology, which has wider bandwidth, higher sensitivity and better signal-noise ratio, providing superb anatomic details to users, delivering excellent resolution and penetration, especially during difficult-patient scanning.

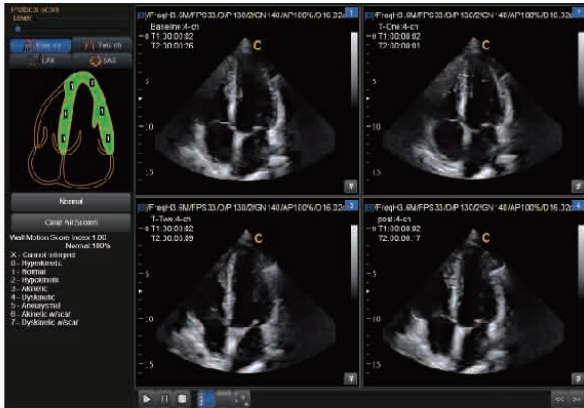




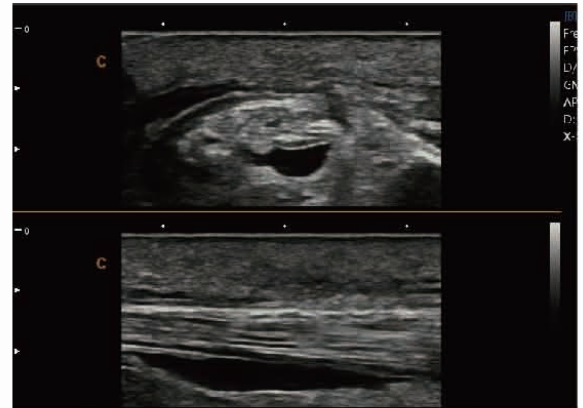
Cardiac, TEE



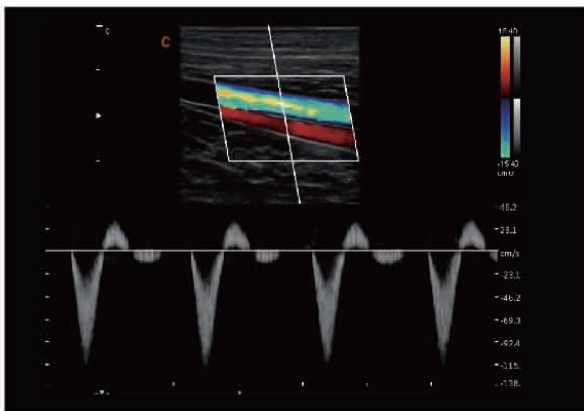
Short axis of mitral valve, B/BC Mode



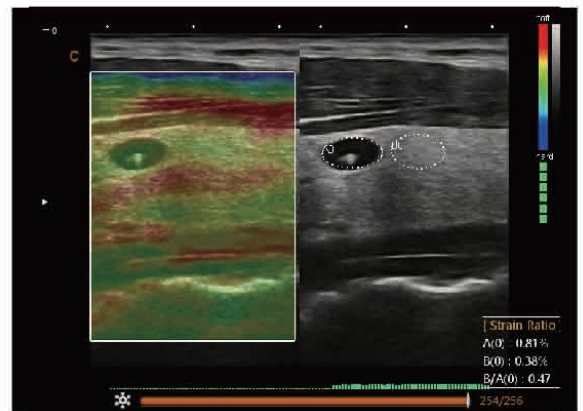
Stress Echo



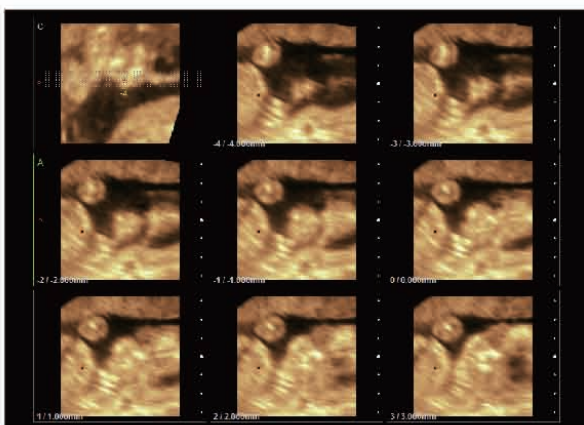
MSK, B Mode



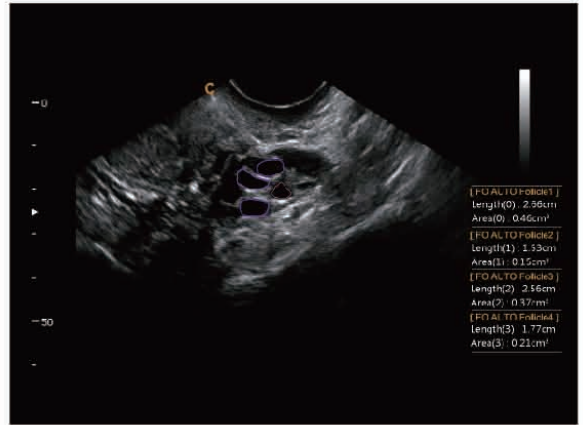
Vessel, PW mode



Thyroid nodule, Elastography



Fetal profile, 4D Multi slice, 24 weeks



Auto-trace follicle measurement



2.0MHz-6.8MHz
Convex
C3-V



4.0MHz-15.0MHz
Linear
L7-V



7.0MHz-18.0MHz
(With FHL) Linear
L12-V



4.0MHz-15.0MHz
Linear
L8M-V



5.0MHz-14.0MHz
Linear
L8M5-V



6.0MHz-16.0MHz
Linear
L10i-V



11.0MHz-23.0MHz
Linear
L18-V



7.0MHz-18.0MHz
Linear
L12b-V



1.5MHz-5.3MHz
Phased array
P2-V



2.0MHz-8.0MHz
Phased array
P5-V



4.0MHz-6.0MHz
Tee(Adult)
T5-V



2.0MHz
Pencil
CW2-V



4.0MHz-12.0MHz Transvaginal
E6-V



4.0MHz-15.0MHz Transvaginal
E7W-V



4.0MHz-15.0MHz Transrectal
R7-V



2.0MHz-6.8MHz Volume
VC4-V



2.0MHz-6.8MHz Micro-Convex
MC3-V



4.0MHz-12.0MHz Micro-Convex
MC6-V



SonoBook9

CHISON MEDICAL IMAGING CO., LTD.

Sales & Service Contact Address:

No. 9 Xin Hui Huan Road, New District, Wuxi, Jiang Su Province, China214028

TEL : 0086-510-85310593 / 85310937

FAX : 0086-510-85310726

EMAIL : export@chison.com.cn