

WWW.CHISON.COM



ECO6

More Advanced **More** Powerful

CHISON

Value Beyond Imaging

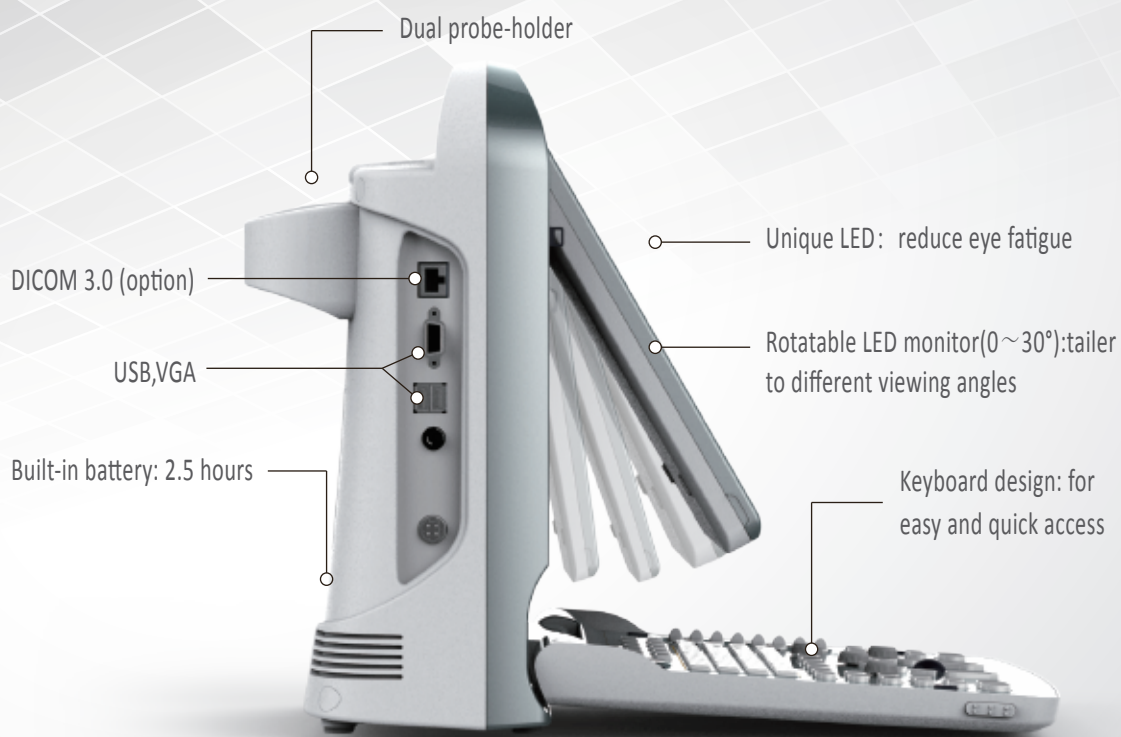
More advanced

More Powerful

As a new member of ECO family. ECO6, has considered the most frequent request of users, adding more advanced features and capabilities inside this ultra-compact body, to provide better patient care.



Easy to operate Easy to go



ONE KEY to selected the desired application with automatic preset



ONE KEY to optimize the image automaticly.



ONE KEY to save still image and CINE loop



ONE KEY to measure



ONE KEY to make report



ONE KEY to print to PC or video printer (see page 4 option)

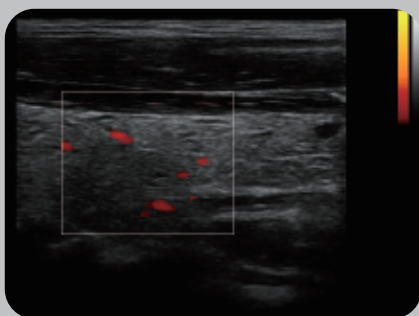


More Powerful

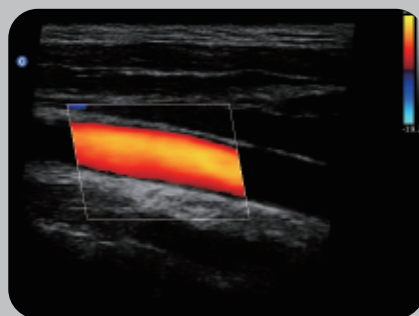
- ✓ *Abdomen, OB/GYN, Urology, cardiac*
- ✓ *Phased array probe*
- ✓ *B steer, super needle*
- ✓ *triplex, Auto IMT, Automatic pw trace, PD,DPD*



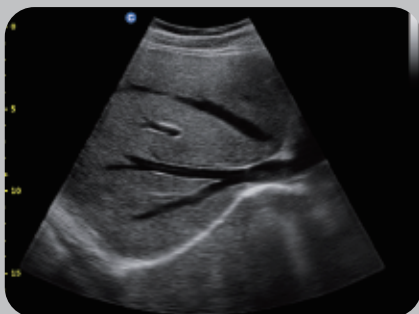
ECO6



Thyroid,PD Mode



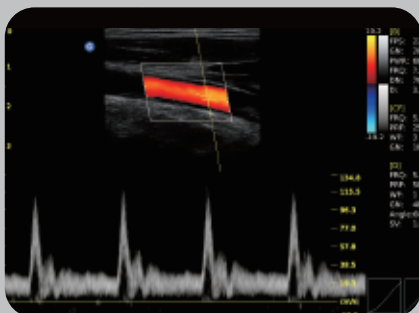
Carotid,B steer



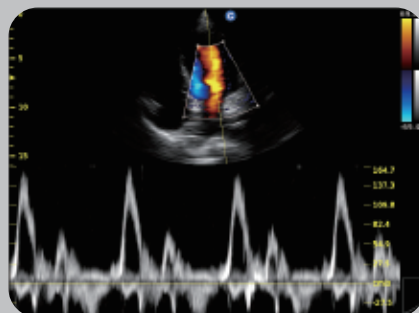
Liver,B Mode



Liver,Color Mode



Carotid,Triplex



Cardiac,PW Mode



2.5MHz-5.0MHz Convex
C3-A



5.3MHz-10.0MHz Linear
L7M-A



5.3MHz-11.0MHz Micro-Convex
L7S-A



4.5MHz-8.0MHz Transvaginal
V6-A



5.0MHz-10.0MHz Linear Rectal
R7-A



2.5MHz-4.5MHz Phased Array
P3-A



2.5MHz-5.0MHz Micro-Convex
MC3-A



4.5MHz-8.0MHz Micro-Convex
MC6-A

CHISON MEDICAL IMAGING CO., LTD.

Sales & Service Contact Address:

No. 9 Xin Hui Huan Road, New District, Wuxi, Jiang Su Province, China214028

TEL : 0086-510-85310593 / 85310937

FAX : 0086-510-85310726

EMAIL : export@chison.com.cn