

CHISON

Value Beyond Imaging



ECO3 VET

The new definition of high-end B&W



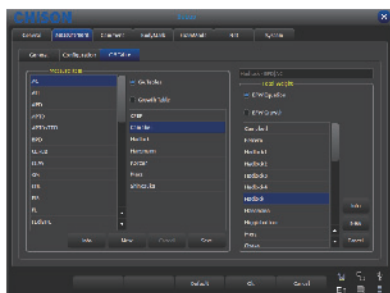
WWW.CHISON.COM



- Ultra-Compact
- Full digital beam-former
- Harmonic imaging (THI)
- Built-in lithium battery (re-chargeable by car)
- Water-proof keyboard cover (option)
- i-Image
- SRA
- Chroma, Trapezoid imaging, Compound image

Streamlined Workflow

The multi-purpose user presets, comprehensive measurement & report system, built-in EasyView image archive system, quick image storage/retrieve/transfer, one-button direct print, makes the complete workflow better than what you can dream of.



Various Measurements



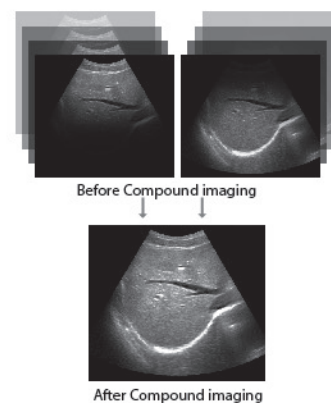
Detailed Reports



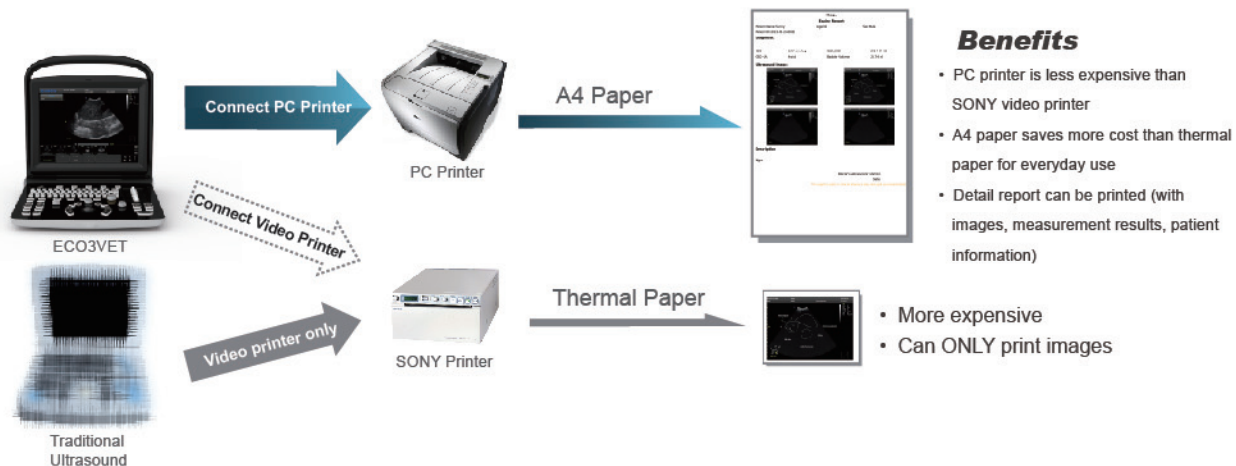
EasyView image Archive System

Compound Imaging

The traditional Compound imaging technologies improve the image quality, but lose the frame rate, which affect diagnosis convenience and efficiency. Our Compound imaging has integrated multiple key factors like frequency, focus and time, but will not sacrifice the frame rate.



Support PC Printer



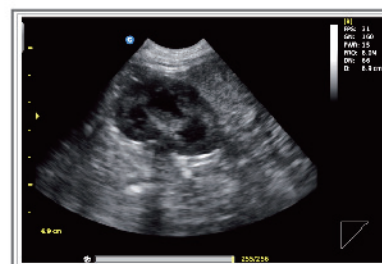
Clinic Value and Applications



Canine Liver



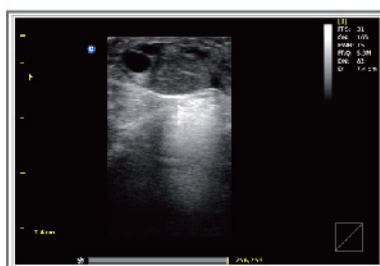
Canine Intestine



Canine Kidney



Bovine Gender



Bovine Follicle



Canine Pregnancy



Specifications



Applications	Large animal: Reproduction, Tendon.
	Small animal: Abdomen, Small parts, Basic cardiology.
Display Modes	B, B/B, 4B, M, B/M
Image Technology	Compound imaging, Trapezoid imaging, Chroma, i-Image, THI, SRA
Probe Frequency	2.5MHz - 11MHz (Depend on the probe types)
Cine Loop	256 frames
Zoom	4 steps
Measurement Packages	General Measurements, Canine: GS, CRL, HD, BD. Feline: HD, BD. Equine: GS. Bovine: BPD, CRL, Trunk Diameter. Ovine: BPD, CRL, Trunk Diameter.
Archives Management	Patient information management, Patient images record, Patient exam report.
Documentation	Full screen documentation, Hospital name, Patient name, Date/time
	Annotation database available, Pre-saved phrases can be recalled
Power Supply	AC 240V-100V, 50Hz- 60Hz
Standard Configuration	Main unit + L7M-A Linear (5.0MHz-10.0MHz) probe+ Double probe connectors+ 3 USB ports +VGA port + Video port+Built-in Battery, LAN-port, 8G memory card
Option	320G Hard disk ,DICOM 3.0, Water-proof keyboard cover, Carry Case (BG-100), Support PC Printer* (HP P2055D, HP 1102, HP M251n) TR-9000 ,THI



One-key quick save



DICOM 3.0 (optional), USB



Carry Case (BG-100) (option)



12 inch rotatable LED monitor (0~30°)
adapt to different view angles



4.5MHz - 8.0 MHz Micro-Convex
MC6-A



5.3MHz - 10.0 MHz Linear
L7M-A



5.3MHz - 11.0 MHz Linear
L7S-A



5.3MHz - 10.0 MHz Linear Rectal
L7V-A



4.0MHz - 7.0MHz Micro-Convex
MC5V-A



2.5 MHz - 5.0 MHz Convex
C3-A

CHISON MEDICAL IMAGING CO., LTD.

Sales & Service Contact Address:

No. 9 Xin Hui Huan Road, New District, Wuxi, Jiang Su Province, China 214028

TEL: 0086-510-85310593 / 85310937 FAX: 0086-510-85310726 EMAIL: export@chison.com.cn

www.chison.com



We reserve the right to make changes to this catalogue without prior notice.
Please contact us or your local dealer for the latest information.

*Please refer to the user manual for details.

E-ECO3VET-150203