

# CHISON

Value Beyond Imaging

Approved by FDA and CE

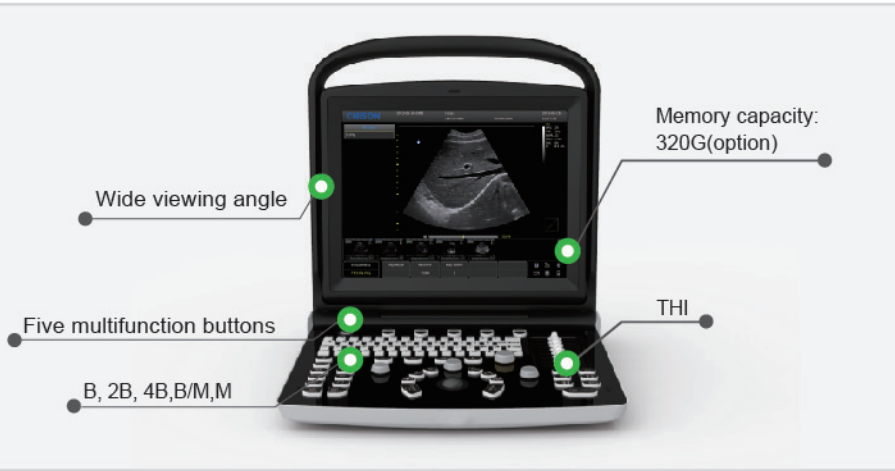


## ECO3

- 12" LED
- Rotatable LED within 30°
- 2 probe connectors
- Built-in battery: 2 hours
- Memory up to: 320G (option)
- DICOM 3.0 (option) , USB

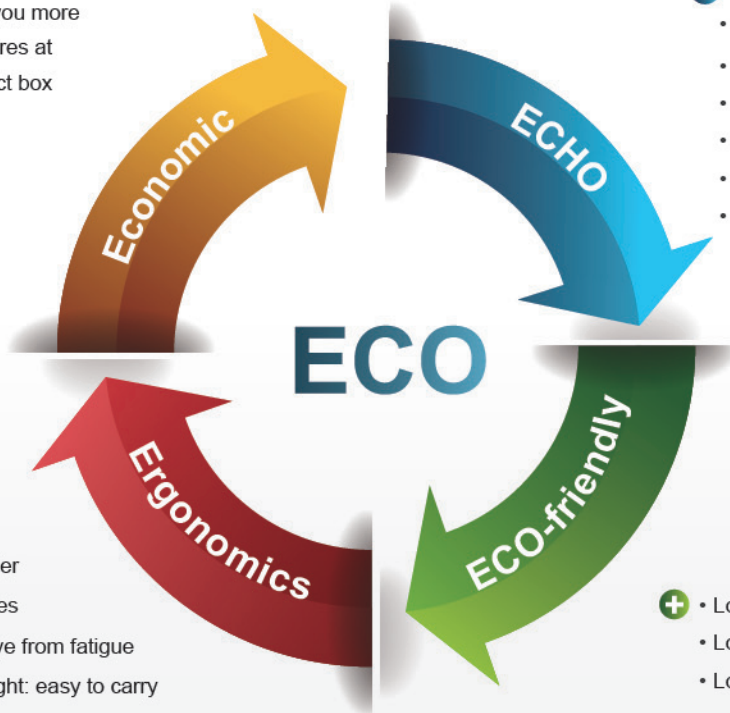


[WWW.CHISON.COM](http://WWW.CHISON.COM)



- Using the latest platform & more advanced chip-set: brings you more advanced image and features at less cost in a more compact box
- Support PC printer: reduce investment & day to day paper cost

- Echography technology
  - Compound imaging
  - Full digital beam-former
  - Trapezoid imaging
  - i-Image
  - THI (Tissue harmonic imaging)
  - SRA (Speckle reduction algorithm)

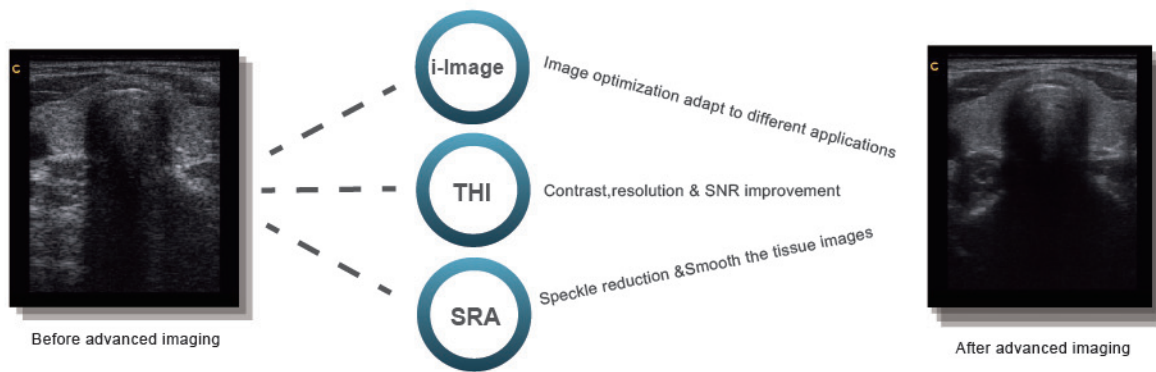


- Rotatable LED monitor (0~30°) : tailor to different viewing angles
- Unique LED: reduce eye from fatigue
- Ultra-compact & Ultra-light: easy to carry
- Keyboard design: for easy and quick access

- Lower radiation
- Lower power consumption
- Longer life: LED

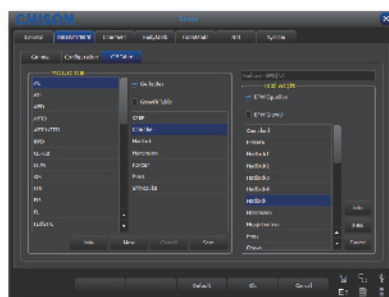


## Advanced Imaging Technologies



## Streamlined Workflow

The multi-purpose user presets, comprehensive measurement & report system, built-in EasyView image archive system, quick image storage/retrieve/transfer, one-button direct print, makes the complete workflow better than what you can dream of.



Various Measurements

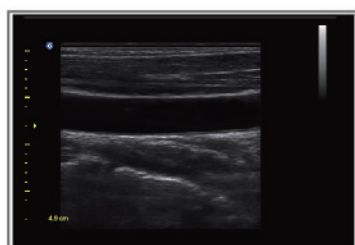


Detailed Reports



EasyView image Archive System

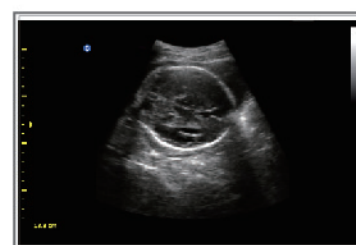
## Clinic Value and Applications



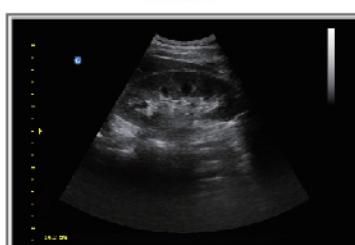
Carotid



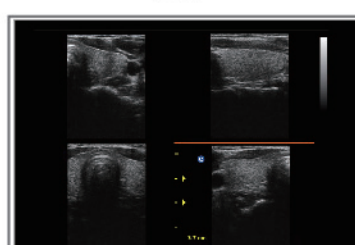
Liver



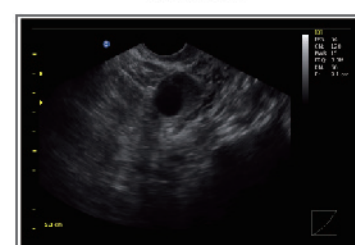
Fetal Head



Kidney



Thyroid



Follicle



# Specifications

Applications	Fetal/OB; Abdominal (GYN & Urology); Pediatric; Small Organ (breast, testes, thyroid); Cardiac (adult & pediatric); Peripheral Vascular; Musculo-skeletal Conventional & Superficial, Transvaginal and Transrectal
Display Modes	B, B/B, 4B, M, B/M
Image Technology	Compound Imaging, Trapezoid imaging, Chroma, i-Image, THI, SRA
Probe Frequency	2.5MHz - 11MHz (Depend on the probe types)
Cine Loop	256 frames
Zoom	4 steps
Measurement Packages	general measurement package, OB measurement package, GYN measurement package, URO measurement package, cardiac measurement package, vascular measurement package, small parts measurement package
Archives Management	Patient information management, Patient images record, Patient exam report.
Documentation	Full screen documentation, Hospital name, Patient name, Date/time
	Annotation database available, Pre-saved phrases can be recalled
Power Supply	AC 100V-240V, 50Hz- 60Hz
Standard Configuration	Main unit + 2.5MHz-5.0MHz Convex probe C3-A + Double probe connectors+ 3 USB ports +VGA port + Video port+Built-in Battery+LAN port, 8G memory card
Option	320G Hard disk, DICOM 3.0, Water-proof keyboard cover, Carry case (BG-100), PC Printer, TR-9000



One-key quick save



DICOM 3.0 (optional), USB



Vehicle Power Charger



Carry case (BG-100) (option)



Ultra-compact



2.5MHz-5.0MHz Convex  
C3-A



5.3MHz-10.0MHz Linear  
L7M-A



5.3MHz-11.0MHz Linear  
L7S-A



2.5MHz-5.0MHz Micro-Convex  
MC3-A



4.0MHz-8.0MHz Transvaginal  
V6-A



4.5MHz-8.0MHz Micro-Convex  
MC6-A



5.0MHz-10.0MHz Transrectal  
R7-A

## CHISON MEDICAL IMAGING CO., LTD.

No. 9 Xin Hui Huan Road, New District, Wuxi, Jiang Su Province, China 214028

TEL: 0086-510-85310593 / 85310937 FAX: 0086-510-85310726 EMAIL: export@chison.com.cn

www.chison.com



We reserve the right to make changes to this catalogue without prior notice. Please contact us or your local dealer for the latest information.

\* Please refer to the user manual for details

ECO3-150203